



PREMJU
EMANUELE LUIGI
GALIZIA
2019
FINALIST

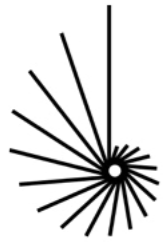
Category:
Quality
Architecture



Completion : May 2019

Office Building owned by
Tipico Group





PREMJU
EMANUELE LUIGI
GALIZIA
2019
FINALIST

Category:
Quality
Architecture

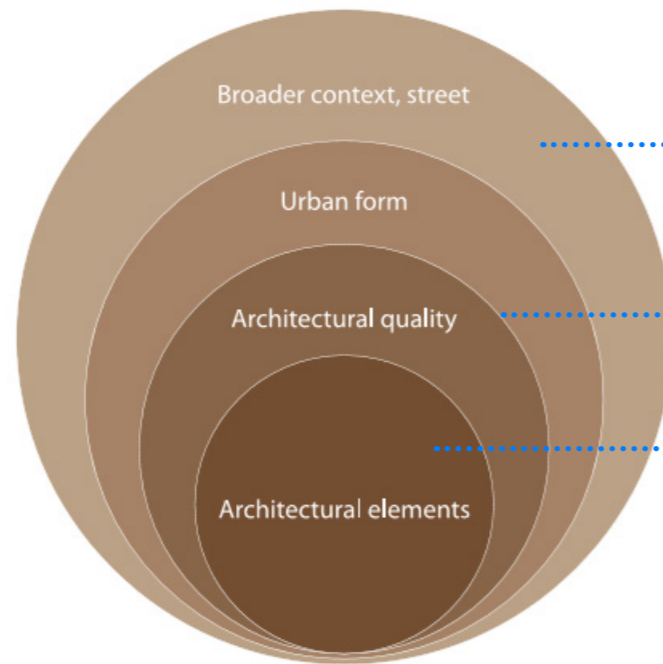
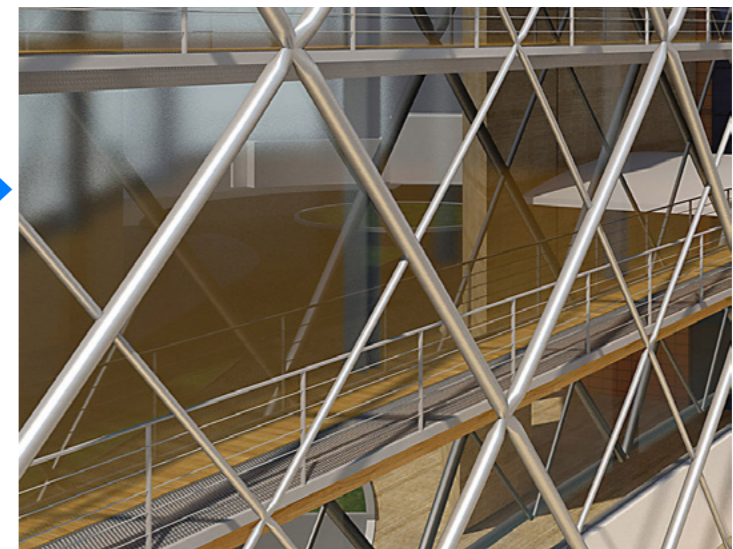
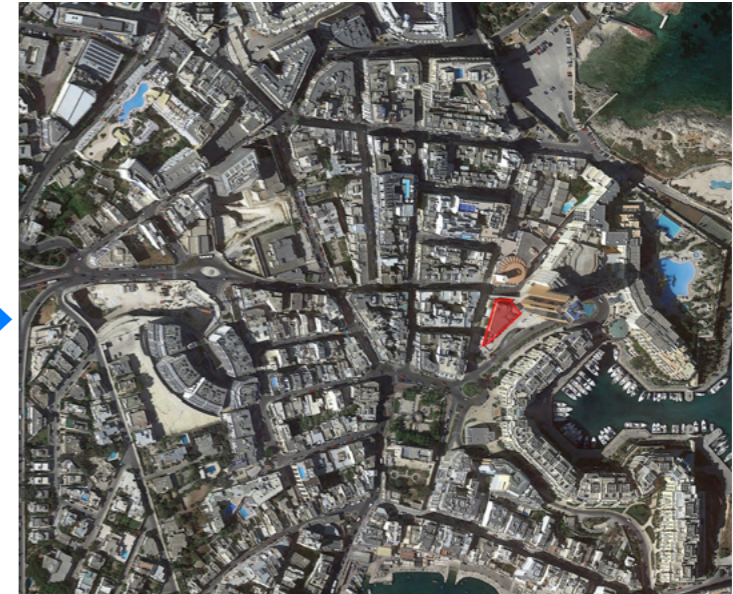
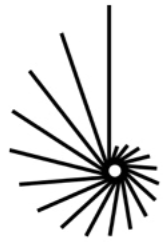


Figure 13: The inter-relationship of spatial scales

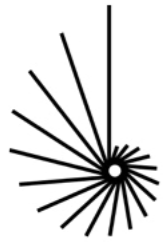




PREMJU
EMANUELE LUIGI
GALIZIA
2019
FINALIST

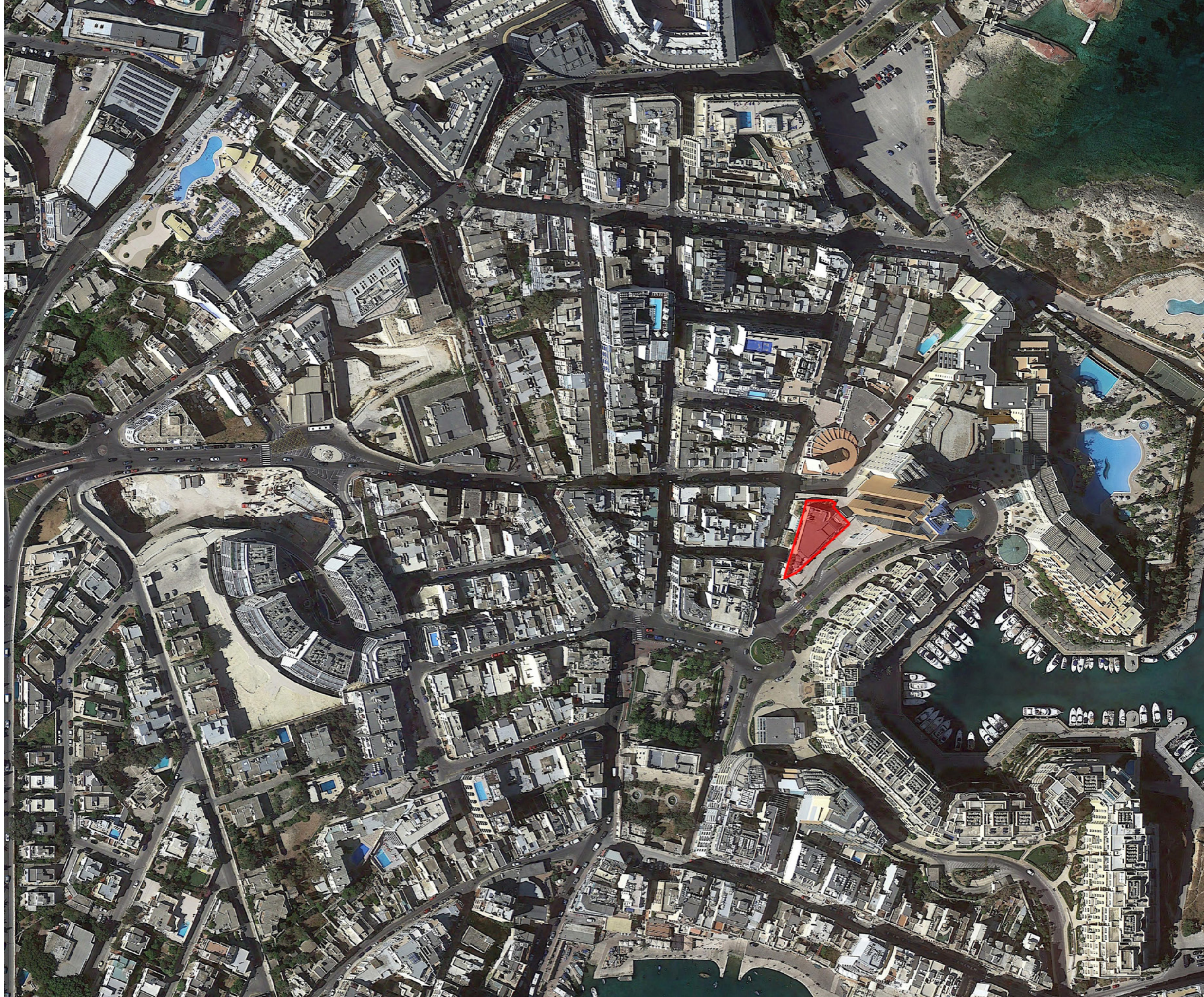
Category:
Quality
Architecture

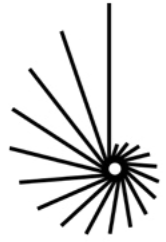




PREMIU
EMANUELE LUIGI
GALIZIA
2019
FINALIST

Category:
Quality
Architecture

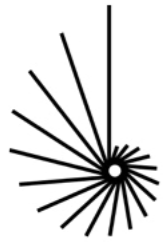




PREMJU
EMANUELE LUIGI
GALIZIA
2019
FINALIST

Category:
Quality
Architecture

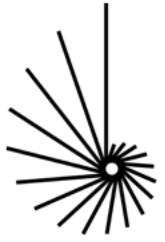




PREMJU
EMANUELE LUIGI
GALIZIA
2019
FINALIST

Category:
Quality
Architecture



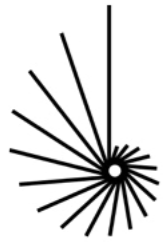


PREMJU
EMANUELE LUIGI
GALIZIA
2019
FINALIST

Category:
Quality
Architecture



Laser scanned point cloud

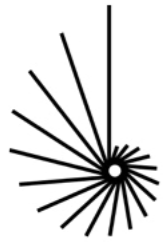


PREMJU
EMANUELE LUIGI
GALIZIA
2019
FINALIST

Category:
Quality
Architecture

BUILDING ENVELOPE & MASSING

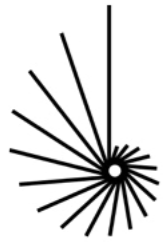




PREMIU
EMANUELE LUIGI
GALIZIA
2019
FINALIST

Category:
Quality
Architecture

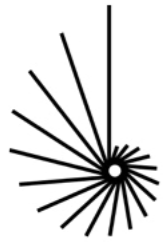




PREMJU
EMANUELE LUIGI
GALIZIA
2019
FINALIST

Category:
Quality
Architecture





PREMJU
EMANUELE LUIGI
GALIZIA
2019
FINALIST

Category:
Quality
Architecture

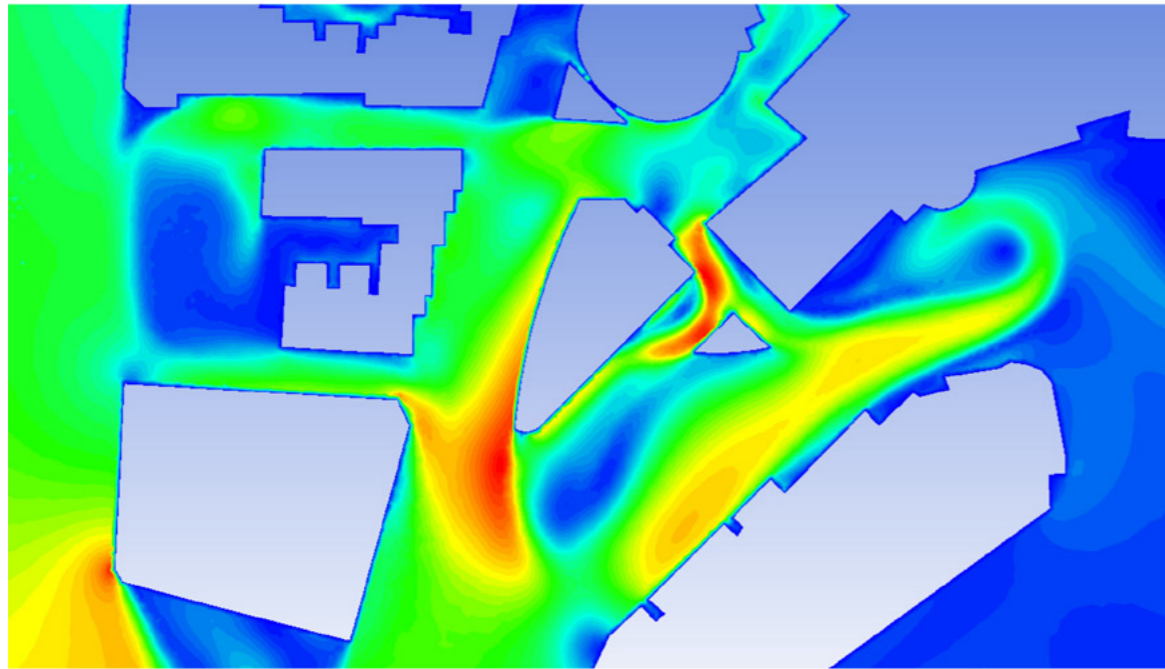


Figure 5: Detailed CFD model (proposed development) simulating North West wind - Surface contour plot of Mean Wind Speed (m/s) at height of 1.5m from Vjal Portomaso

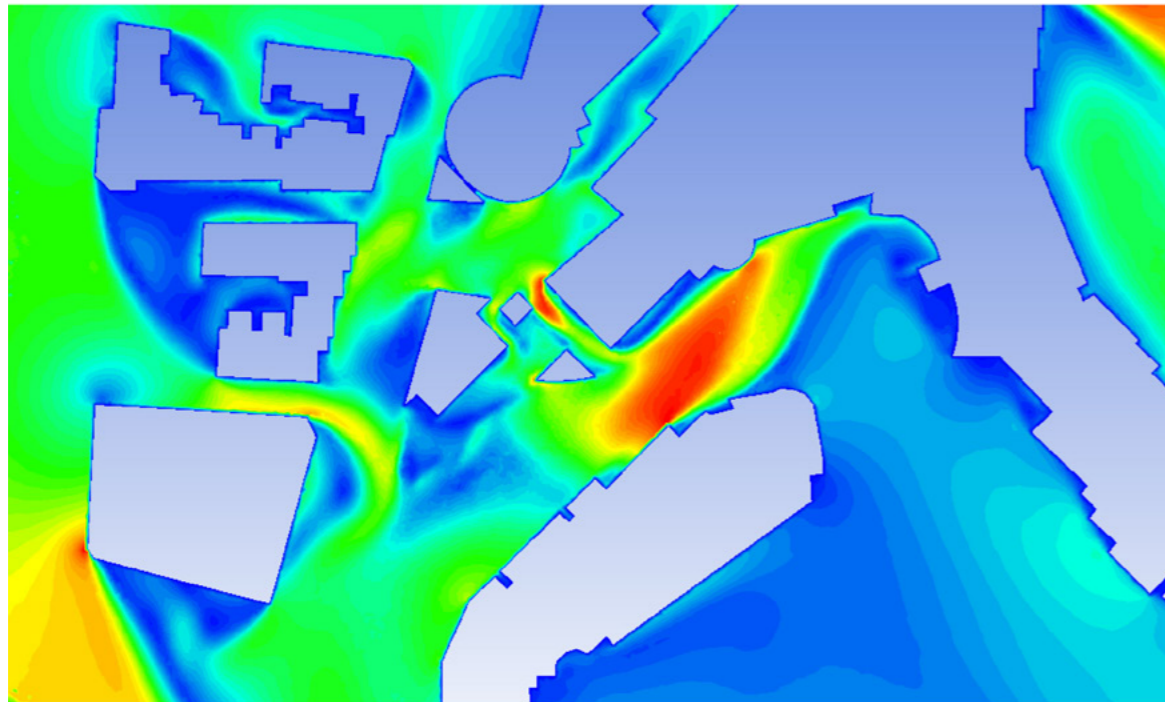
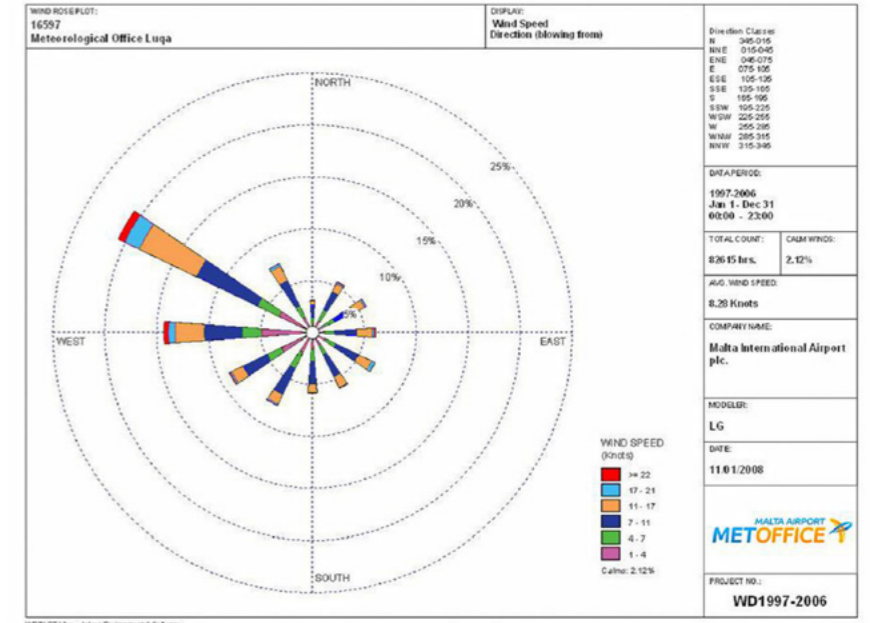
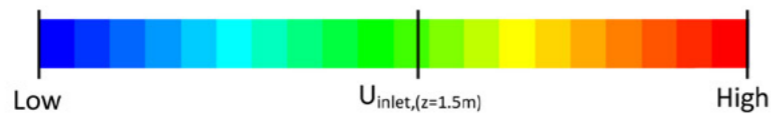
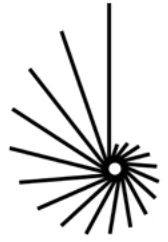


Figure 6: Detailed CFD model (current development) simulating North West wind - Surface contour plot of Mean Wind Speed (m/s) at height of 1.5m from Vjal Portomaso



CFD model simulating North West Wind at height 1.5m above Vjal Portomaso

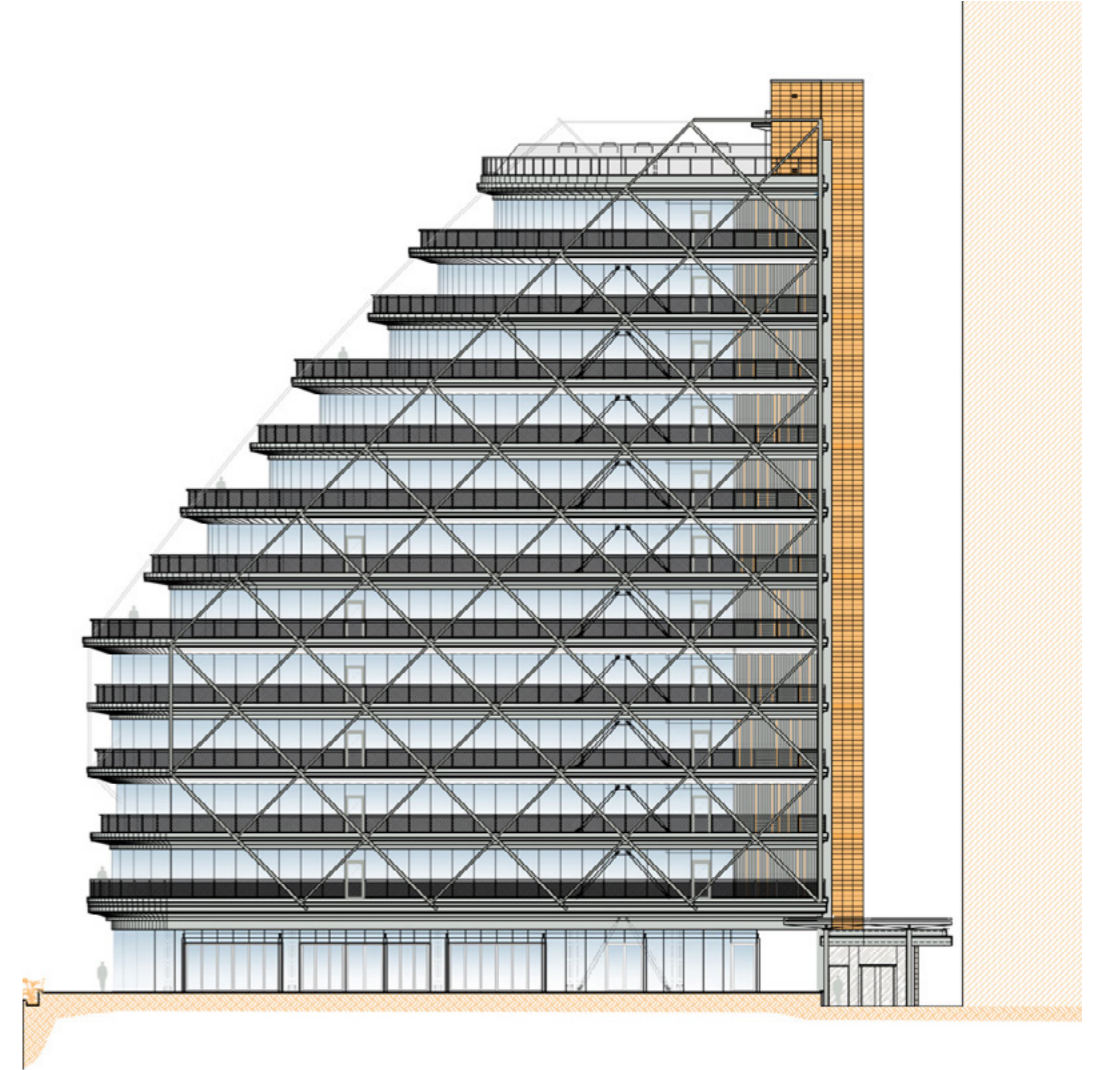


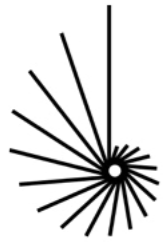


PREMJU
EMANUELE LUIGI
GALIZIA
2019
FINALIST

ENVIRONMENTAL

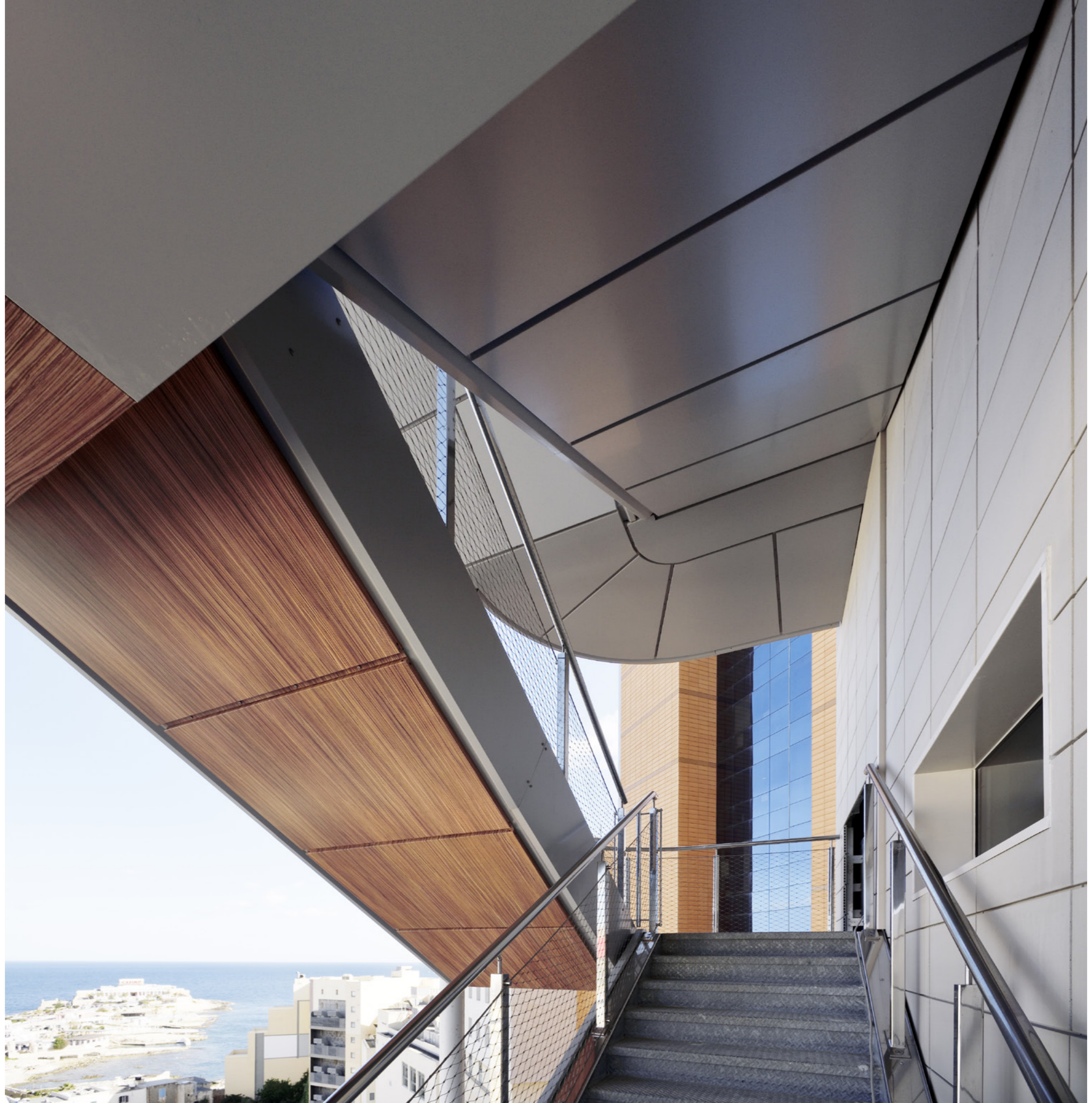
Category:
Quality
Architecture

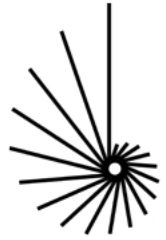




PREMJU
EMANUELE LUIGI
GALIZIA
2019
FINALIST

Category:
Quality
Architecture



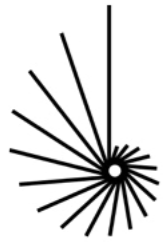


PREMJU
EMANUELE LUIGI
GALIZIA
2019
FINALIST

STRUCTURE

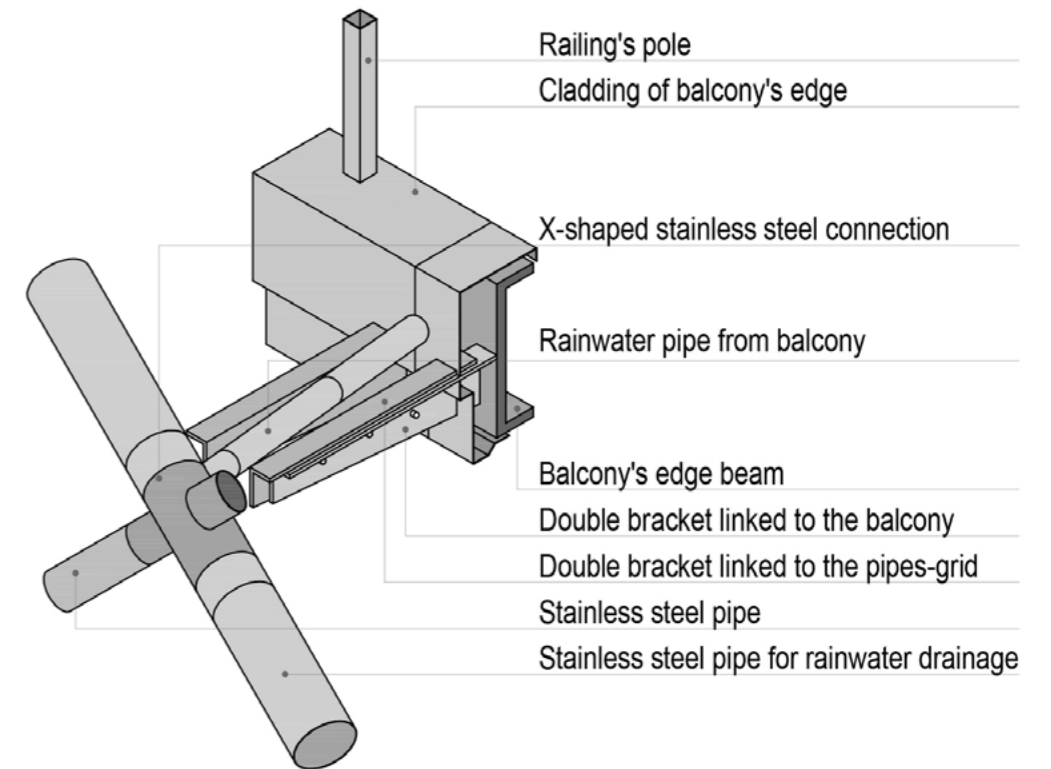
Category:
Quality
Architecture





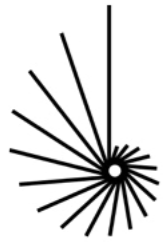
PREMJU
EMANUELE LUIGI
GALIZIA
2019
FINALIST

Category:
Quality
Architecture



STAINLESS STEEL RAINWATER DIAGRID

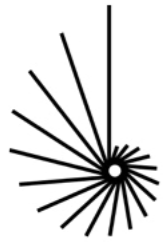




PREMJU
EMANUELE LUIGI
GALIZIA
2019
FINALIST

Category:
Quality
Architecture





PREMJU
EMANUELE LUIGI
GALIZIA
2019
FINALIST

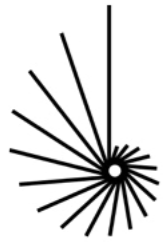
Category:
Quality
Architecture



From left to right:

Federico Maso, Daniele Wegher (Pichler), Ray De Micoli, Giuliano Bonaventura, Davide Bonaventura, Michele Garbin

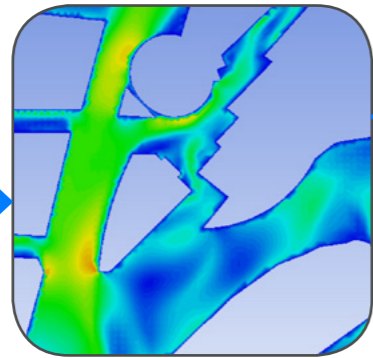




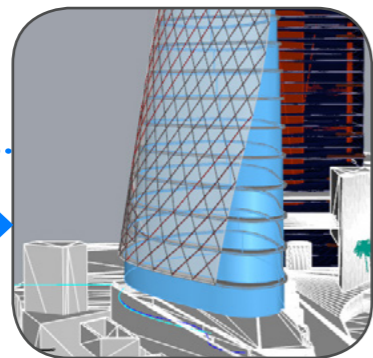
PREMJU
EMANUELE LUIGI
GALIZIA
2019
FINALIST

Category:
Quality
Architecture

INTEGRATION



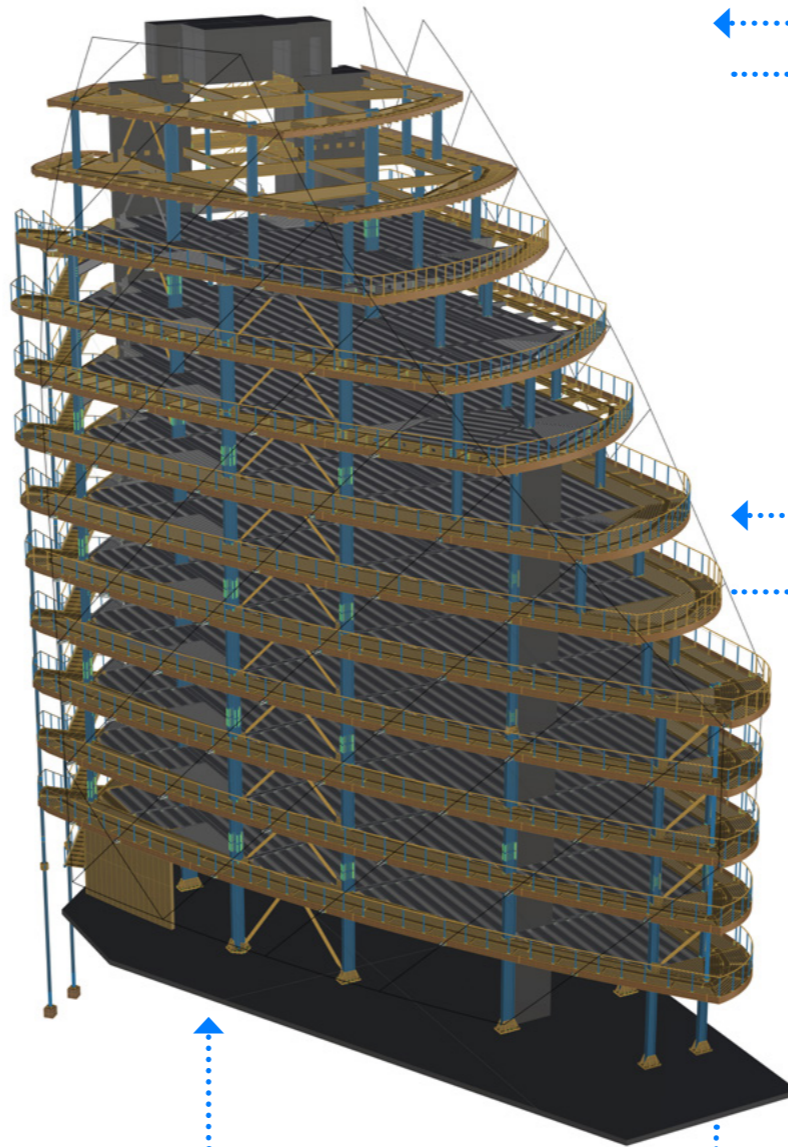
CFD ANALYSIS



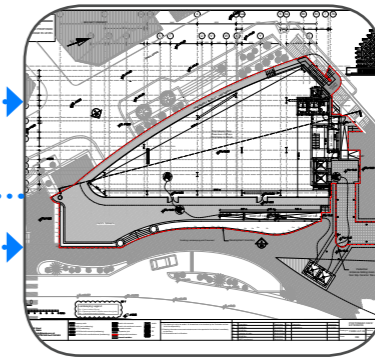
COMPUTATIONAL
MODELLING



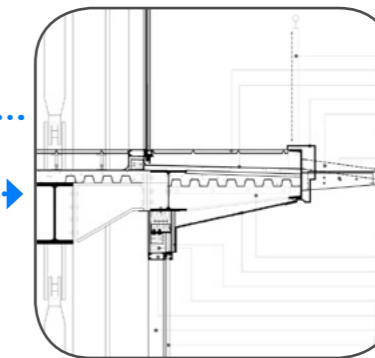
LASER SCANNING



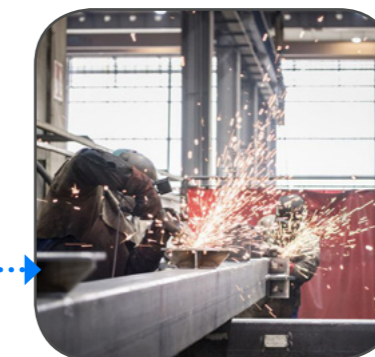
STRUCTURAL BIM MODEL



ARCHITECTURAL &
STRUCTURAL CAD

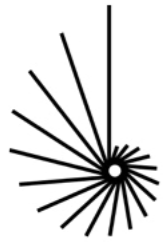


WORKSHOP
DRAWINGS



FILE TO FACTORY
MANUFACTURING

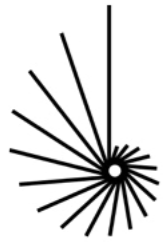




PREMJU
EMANUELE LUIGI
GALIZIA
2019
FINALIST

Category:
Quality
Architecture

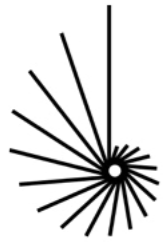




PREMIO
EMANUELE LUIGI
GALIZIA
2019
FINALIST

Category:
Quality
Architecture





PREMIU
EMANUELE LUIGI
GALIZIA
2019
FINALIST

Category:
Quality
Architecture

